



# 2024 ANNUAL REPORT

## Seattle's Forest: The West Duwamish Greenbelt

SWSHS's 2024-25 exhibit was developed in partnership with the **West Duwamish Greenbelt Trails Coalition** and with support from **Ridge 2 River, the Duwamish Tribe, and Delridge Neighborhoods Development Association**. The opening reception in September welcomed 40+ attendees. The exhibit explores the geologic, indigenous, industrial, and political history of the city's largest contiguous forest, features community sourced photographs, and includes Trail Marker panels to help young learners ask and answer questions about urban natural environments.



t?awi Creek of Hope: Award of Excellence in Exhibitions, Washington Museum Association



In June, the Southwest Seattle Historical Society, Duwamish Alive Coalition, and Delridge Neighborhoods Development Association were awarded an **Award of Excellence in Exhibitions by the Washington Museum Association** for t?awi Creek of Hope, which closed in September 2024. SWSHS's Programs and Community Outreach Director accepted the award at the 2024 WaMA Conference in Vancouver, WA.

## Museum Programs

### Museum Admission and Scheduled Tours

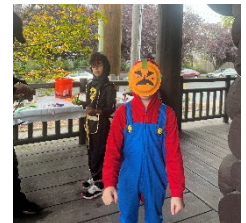
In 2024, the Log House Museum welcomed more than **1,900 Museum Visitors** including **331 tour participants**, representing a 20% increase from 2023. Most visitors visited the museum for the **first time** in 2024. Over half of our visitors visited from outside the Duwamish Peninsula. Over a third of our visitors were **youth**.

### Southwest Seattle Historical Society Programs



In 2024, the Southwest Seattle Historical Society provided **free, donation-based programming** to more than **1,000** registered attendees, including **216** attendees for our **Alki History Walking Tours** led by volunteer Meagan Loftin. Tours were exceedingly popular and **TWICE** sold out.

SWSHS's monthly speaker series **Words, Writers, Southwest Stories** featured twelve speakers and provided virtual programming for nearly **500 registered participants**. Timely topics included antisemitism, Asian American storytelling, black history, Tribal sovereignty, Latina issues, hip-hop culture, and the Seattle grunge music scene.



Two **Family Day** Programs welcomed **400 visitors**, many for the first time, to the Log House Museum.

## Collections

Select SWSHS collections have been viewable online since late 2023. In 2024, SWSHS was able to secure **grant funding** to purchase **new technology equipment**, including an interactive touchscreen where museum visitors can browse our entire collections catalog during their museum visit.



*Browse SWSHS  
Collections Online*

Collections volunteers have inventoried **1,146** objects from the museum's permanent collection; scanned and uploaded **715 images** to our online catalog; and scanned over **5,300 images** from a unique collection of real estate records, inventoried over **100** issues of Footprints, and inventoried over **300** books in SWSHS's research library.

# Strategic & Interpretive Planning

## Strategic Planning

The Southwest Seattle Historical Society adopted our **2024-2026 Strategic Plan**, developed with support from the **Washington State Historical Society**, in January of 2024. The plan is underway, with a significant amount of work ahead. Objectives that have been advanced in 2024 include:

- Revise SWSHS financial procedures
- Research new sponsorships
- Develop a Board Matrix to guide SWSHS in board recruitment
- Develop a Communications Plan
- Develop a Community Advisory Committee
- Develop a budget and secure grants for a new permanent exhibit at the Log House Museum
- Re-start a SWSHS Collections Committee and revise collections policy as needed
- Create digital access to museum's online collections catalog

## Interpretive Planning

In 2024, SWSHS began **Interpretive Planning** with an inaugural grant from **Maritime Washington National Heritage Area**, to develop a permanent, interactive exhibit at the Log House Museum to tell the stories of the Duwamish Peninsula. The grant funds a contract with exhibit designer, Chris Erlich, through August of 2025. The initial planning meeting was attended by **15 community partners and heritage consultants**, including representatives of the SWSHS Board of Trustees.

A PARTNER OF



**MARITIME  
WASHINGTON**  
NATIONAL HERITAGE AREA

*Shaped by Sea & Story*

# SWSHS Community

## Volunteer Program

SWSHS has **42 regularly active volunteers**, including board members, advisory committee members, Museum Greeters (8), Collections (5), Education (5), and Native Plant Garden volunteers (6). SWSHS welcomed **five new or newly returned** volunteers in 2024. In total, volunteers contributed over **1,200 documented volunteer hours** this year which is a 33% increase from 2023.

SWSHS also hosted a student volunteer from the **Big Picture High School** in Burien for a day of shadowing in collections work.



### Membership

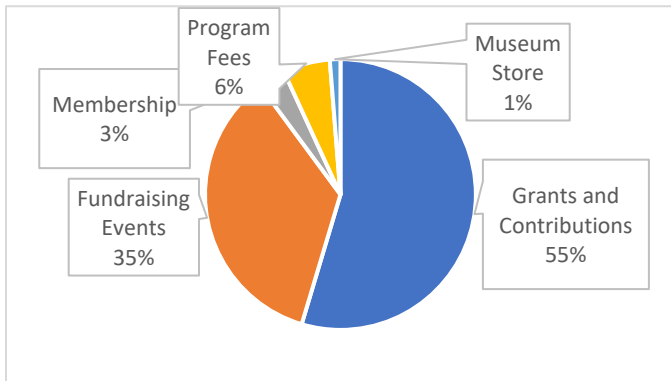
Year to Date, SWSHS has **89 Active Members**, including **nine new members** joining in 2024. This number is down from last year’s total of 101 active members.

### SWSHS Leadership

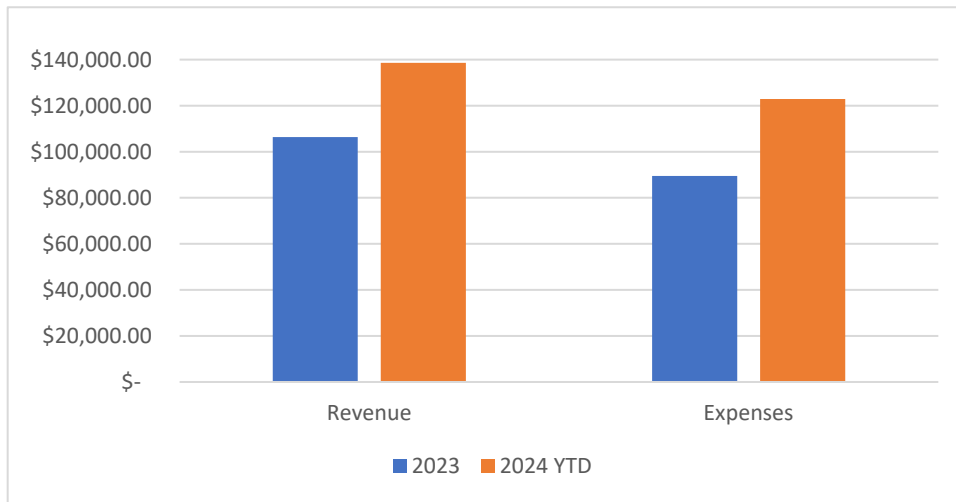
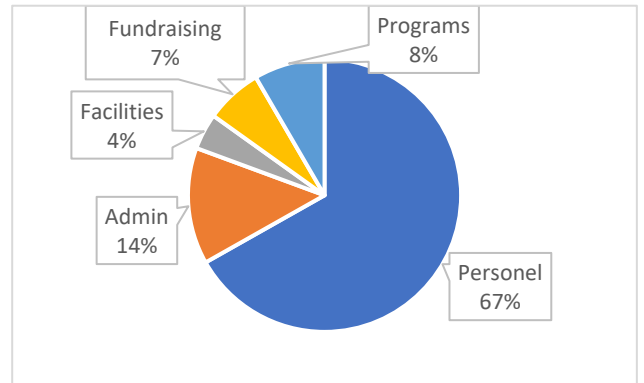
SWSHS is led by a twelve-member Board of Trustees and is supported by multiple advisory committees including the **DEAI** (Diversity, Equity, Accessibility, and Inclusion) Committee, **Events Committee**, **Facilities Committee**.

## Financials

2024 Revenue



2024 Expenses



Your end of year contributions will propel SWSHS into 2025 and beyond. Make your year contribution today at [www.loghousemuseum.org](http://www.loghousemuseum.org) or by mailing you contribution to:

Log House Museum at  
3003 61<sup>st</sup> Ave SW, Seattle WA 98116





The Southwest Seattle Historical Society has thrived on the support of countless, dedicated individuals from the Duwamish Peninsula and beyond. It is with deep gratitude that we remember SWSHS members and supporters who passed this year, including two beloved past board members.

**Kathy Blackwell**, SWSHS President, 2019 - 2023. Kathy passed in February of this year after years of dedicated service leading the SWSHS with vision, grace, and an unmatched love for West Seattle and the Duwamish Peninsula.

**Burke Dykes**, SWSHS Trustee, 2016 - 2019. Burke passed away in October of this year. Burke was a longtime supporter of the Historical Society and often opened his own home to host gatherings for SWSHS members. He is remembered for his generosity and warmth. Burke was also involved with the Center for Active Living (West Seattle Senior Center).

